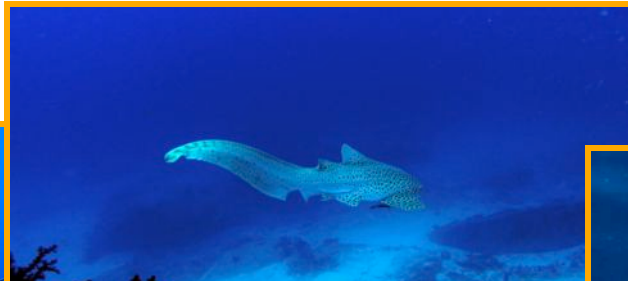




*Scuba Cat Diving*  
**MV Scuba Adventure**  
*Phuket, Thailand*

**KOH BON**



**SIMILANS**



**Hin  
Deang  
&  
Mueng**

**Koh Tachai**

**RICHELIEU ROCK**



*The Ultimate Adventure!!!*

## MV Scuba Adventure Liveboard



Welcome onboard Scuba Adventure, one of the original, classic liveboards cruising the warm waters of the Andaman Sea, visiting the wonderful sites of the Similan National park and the Surin National Park which includes Koh Bon, Koh Tachai, the world famous Richelieu Rock, Hin Deang and Hin Mueng.

Scuba Adventure is truly a comfortable vessel, comprising 5 twin cabins, 2 double cabins, all with individually controlled air conditioning accommodating a maximum of 12 guests. The covered deck is the place to relax and relax, to enjoy a movie or read a book or discuss the dives with your buddies. The dive platform is compact and spacious and well organized which makes it the ideal platform to enter the magical realm of the Andaman Sea.

With a very experienced Thai boat crew (over 10 years) looking after all your needs – from getting ready for the dive to preparing wonderful Thai cuisine.



The key to our success onboard Scuba Adventure is listening and understanding to our guests desires. With flexible itineraries for the dives trips, our very experienced dive crew will provide you with the best possible dive sites of the Andaman Sea! In addition we monitor the radio for information regarding sightings at various locations to give you the best chances of seeing wonderful creatures like manta rays and whale sharks.

From the moment you arrive to the moment you leave, your experience onboard Scuba Adventure will leave you with the desire to come back again and again.

Our excellent dive crew, lead by Kath will lead you on your magical journey. Kath is English and has worked in the area for over 5 years diving the sites of the Similan and Surin National Parks. Although Kath knows the dive sites like the back of her hands, she still finds new things on every dive.



## Your Trips



Our 4 day/night and 5 day/night trips depart from Patong Beach in Phuket. Departure is in the evening with a short overnight cruise. When you awake the following morning you will be greeted by the beauty of the **Similan Islands**. After a light breakfast you will be ready to make your first dive into this beautiful underwater world! When you return to the boat, a full breakfast will be waiting for you. Over the following days you will steadily make your way to the small islands of **Koh Bon**, **Koh Tachai** and the famous **Richelieu Rock**, enjoying dive after spectacular dive along the way



## Prices for Similans/Koh Bon/Koh Tachai/Richelieu Rock

Duration	Departure	Price	No of Dives
4 Days / 4 nights	See our Schedule	28.700 THB	14
5 Days / 5 Nights	See our Schedule	37.700 THB	18

### Note:

- Price is per person in shared cabin.
- For Single Occupancy please adds 50 %
- Non-Divers receive 10% discount.
- Equipment Rental 750 Baht per day for a full set payable locally
- 15l tank available to rent 300 Baht per day

### Included in the price:

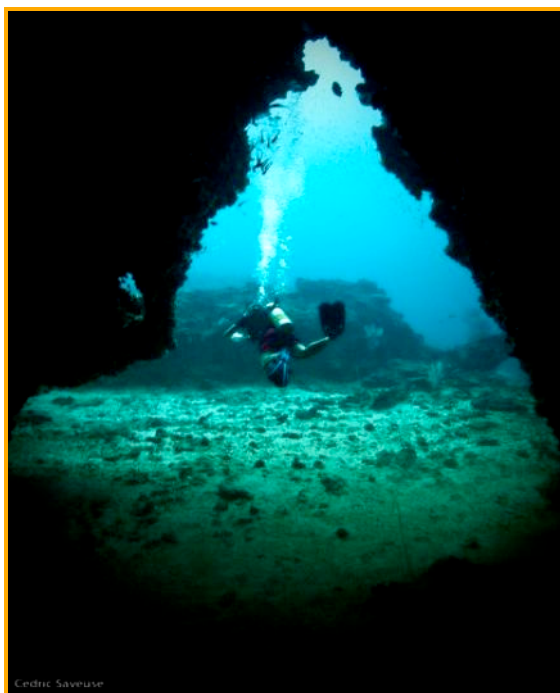
- Hotel transfers, 2 Nitrox Dives per day -
- Freshly cooked buffet meals, Snacks, Fruits, Coffee, Tea, Towels, Tanks, Weights, Divemaster service, Dive torch

### In order to provide the best service

- A maximum of 12 divers in 2 double and 5 twin cabins.
- Each cabin has its own air-con unit.
- Four toilets/showers with hot water.
- Portholes in the lower cabins providing natural lighting.
- Nitrox available onboard



## Hin Mueng & Hin Deang Trip



Hin Deang and Hin Mueng are one of the best places in the world to spot Manta rays and Whale sharks.

Our 3-days/3 nights trip depart from Patong Beach in Phuket. Departure is in the evening with a short overnight cruise. When you awake the following morning you will be ready to jump. After a light breakfast you will be ready to make your first dive into this beautiful underwater world! When you return to the boat, a full breakfast will be waiting for you. Over the following days you will steadily make your way to the Hin Deang and Hin Mueng, enjoying dive after spectacular dive along the way.

Night dives there are absolutely spectacular, certainly are of the best in the world.



## Price for Hin Deang & Hin Mueng Trip

Duration	Departure	Price	No of Dives
3 Days/ 3 Nights	See our Schedule	18,000 THB	10

### Note:

- Price is per person in shared cabin.
- For Single Occupancy please adds 50 %
- Non-Divers receive 10% discount.
- Equipment Rental 750 Baht per day for a full set payable locally
- 15l tank available to rent 300 Baht per day

### Included in the price:

- Hotel transfers, 2 Nitrox Dives per day -
- Freshly cooked buffet meals, Snacks, Fruits, Coffee, Tea, Towels, Tanks, Weights, Divemaster service, Dive torch

### In order to provide the best service

- A maximum of 12 divers in 2 double and 5 twin cabins.
- Each cabin has its own air-con unit.
- Four toilets/showers with hot water.
- Portholes in the lower cabins providing natural lighting.
- Nitrox available onboard



## SIMILAN ISLANDS/RICHELIEU ROCK - 4 days / 4 nights



### Departure:

Check in prior to 17:00 on departure day at Scuba Cat Diving Patong Beach. Hotel pick up for guests already checked in 18:00. Transfer to **MV Scuba Adventure** by 19:00 for boat and safety briefing, cabin assignment and then set up dive equipment. Prior to departure the crew set off firecrackers to appease the spirits of the sea bringing good luck for your journey. Dinner is served next as we start off for our leisurely overnight passage to the Similan Islands

*\*\*\*Please note: we can accommodate evening airport arrivals on departure day- please check with our booking office.*

### Day 1 – 4 Dives

7am wake, up open your eyes and see paradise! After a light breakfast, 1st dive around 8am may be at the beautiful coral reef known as **East of Eden** on Island 7. The dive is followed by a full western breakfast with always plenty of conversation as your new friends settle into the Eat, Sleep, and Dive routine. Dive #2 at world famous **Elephant Head Rock** between islands 7 & 8. You will enjoy coral encrusted swim through, sharks, giant trawler and mostly large fish action at this remarkable site. Macro enthusiasts should look out for specials like dragonets, whiskered pipefish, nudibranchs, peacock mantis shrimp and more! Then we cruise north to **Koh Bon** to see if the Mantas are dancing off West Ridge. The night dive will feature crustaceans, sea stars, morays, lionfish plus more. Dinner is served then its time to relax with our new friends over a cold beer on the party deck.



### Day 2 – 4 Dives

An early morning departure cruises us up to **Koh Tachai** to dive the fabulous "Plateau" - leopard sharks sleep around 25 meters while over head masses of barracuda, big eye trevally and a wonderful school of resident batfish wait the keen diver - maybe even a chance for an angler fish hiding among the cabbage corals on the dome. Whale sharks are frequent visitors to this dive site as are mantas!!!

Next we cruise north for 2 hours to the world famous **Richelieu Rock** for a minimum of 2 dives - sea horse, frog fish, harlequin shrimp, ornate ghost pipefish plus more will delight the macro enthusiast with loads of fish action for everyone - rivers of fusiliers, big schools of jacks, chevron barracuda, yellow striped snapper swim in the blue around "the Rock" with giant garoupa standing sentinel at the many coral heads just off the Rock - dripping with yellow, purple and pink soft corals. A sunset dive at Richelieu Rock is a treat if conditions allow otherwise it's off to Koh Tachai for a good night dive where we shelter in a quiet bay for the night.

## Day 3 – 4 Dives

Early morning, another chance for the pelagic action of Koh Tachai and then its back to Koh Bon for more sharks and manta action off the West Ridge or a deep dive on the Pinnacle for advanced divers! Relax over lunch as we cruise back to the Similans for an island adventure to enjoy the white sand beaches and awesome granite boulder formations. Then Dive #3 in the warm blue waters of **Anita's Reef Island #5** - wow - are your cameras fully charged? Night diving at **Honeymoon Bay** or the **Hideaway** will give you the chance to see loads of big and small crabs, lobster, shells and more - maybe a twin spot lion fish, a Spanish dancer.



## Day 4 – 2 Dives

Today 2 morning dives around the southern Similan Islands - **Boulder City** and **Shark Fin Reef** often feature on the itinerary that is developed each trip to suit conditions and all divers on board. These sites are washed by light to moderate currents bringing swarms of baitfish attracting pelagic and reef fishes galore. Loads of gorgonian fans dot the sea floor providing homes for creatures big and small and plenty of photo opportunities. Look around the many huge granite boulders for leopard sharks, napoleon wrasse, oriental, sweet lips, jaw fish and more.

Your Similan/Richelieu adventure comes to an end as we cruise back to Patong Phuket arriving around 16:30 hours - relax over a yummy lunch while the crew wash your equipment and ready the boat for arrival- all part of the service on board MV Scuba Adventure. On shore you will be transferred to your hotel or our shop for assistance in reaching your next destination.



## Hin Deang & Hin Mueng – 3 days / 3 nights

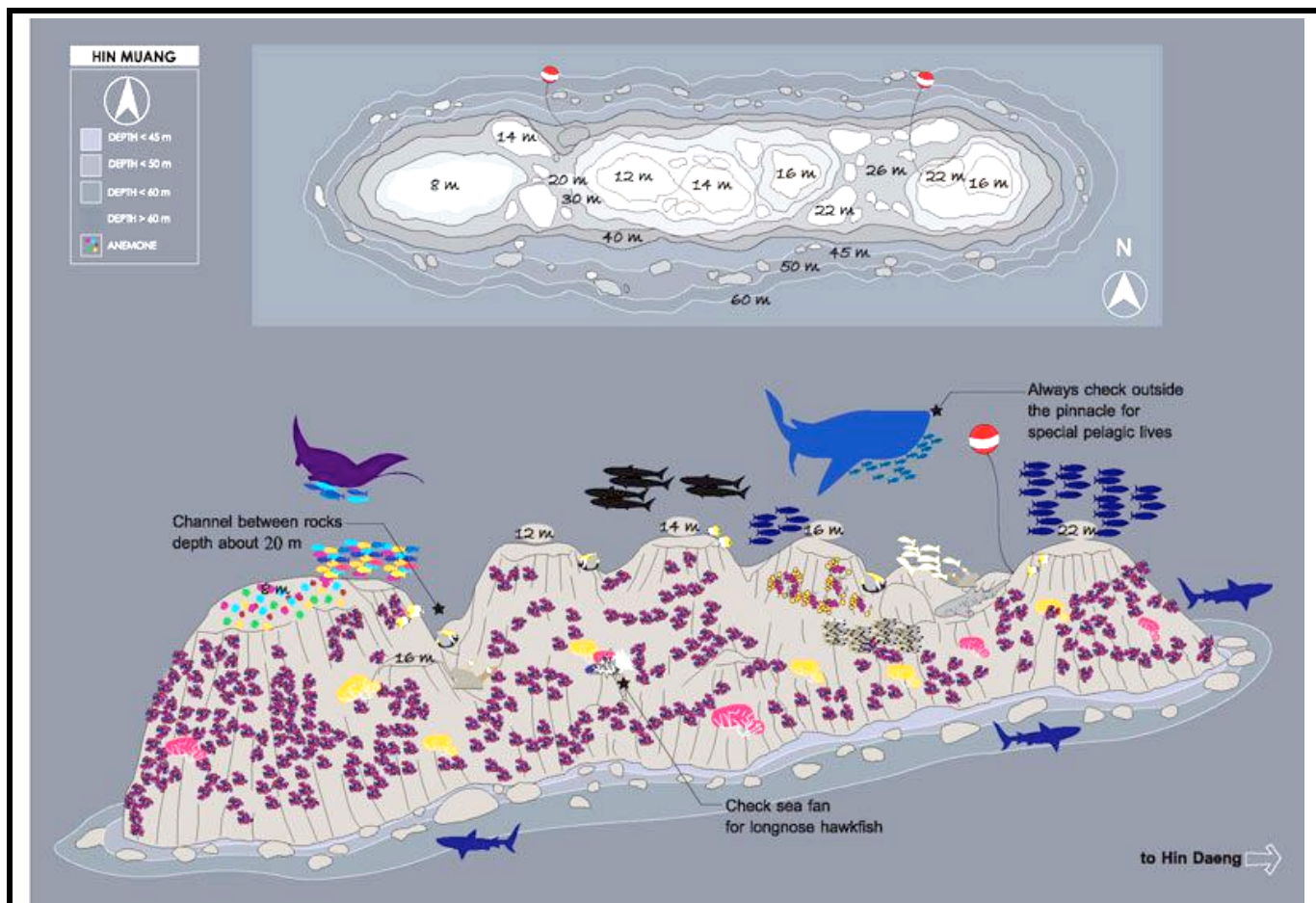


### Departure:

Check in prior to 17:00 on departure day at Scuba Cat Diving Patong Beach. Hotel pick up for guests already checked in 18:00. Transfer to **MV Scuba Adventure** by 19:00 for boat and safety briefing, cabin assignment and then set up dive equipment. Prior to departure the crew set off firecrackers to appease the spirits of the sea bringing good luck for your journey. Dinner is served next as we start off for our leisurely overnight passage to Hin Deang and Hin Mueng, Koh Ha, and Koh Phi Phi

**Day 1 – 4 Dives    Day 2 – 4 Dives    Day 3 – 2 Dives**

You trip will take you to the most beautiful dive sites in the southern part of the Andaman sea: Hin Deang, Hin Mueng, Koh Ha and Koh Phi Phi. After a short over night trip, the first day we will do 4 dives, for the second day 4 dives as well and 2 dives on the last day. During this time you will dive Hin Deang and Hin Mueng two famous dive sites to spot Manta Rays and Whale Sharks. Koh Ha is a beautiful island with big caves, you can see as well massive sea fans, reef sharks, abundant marine life. Koh Phi Phi is famous for ghost pipefish, leopard sharks, turtles, manta rays and whale sharks are also spotted. Anywhere in these different dive sites night dives are a must. The trip is fantastic for diving and also for sceneries, sailing through these beautiful islands will make your trip magical.



## Hin Deang & Hin Mueng sites descriptions

**Hin Deang** (Red Rock) is a familiar name for anyone interested in Asian diving. It is often rated Thailand's best dive site, and features several different drop offs connected by rock shelves at many levels. The coral and marine life are outstanding here. Most dive guides list Hin Deang as a sure place to see whale sharks and manta rays. There are no sure things but with a bit of luck you'll have a special diving story to take home. Just breaking the surface of the sea, world-famous Hin Deang is a huge dive with depths down to well below normal recreational limits. The southwest side drops to over sixty meters, creating a steep wall of soft corals. Leopard sharks are often seen in this area, as well as frequent whale sharks and manta rays. The east side has the best soft coral growth, with two ridges that slope gently into deep water. Pelagic fish such as jacks gather close to the rocks, and in shallower areas moray eels are commonly found hiding in cracks in the rock face. Hin Deang is also a good spot to see smaller sea creatures such as nudibrachnes, cowries shells and various species of shrimps.

Just 500 meters from Hin Deang lays sister site **Hin Mueng** (Purple Rock). This might not be the first dive after your Open Water Certification, but with a bit more experience this dive is a must. The reef has five "legs", the shallowest at 8 meters and the deepest at 70 meters, one of the deepest sites in Thailand.

## Koh Ha & Phi Phi sites

**Koh Ha:** The highlight of diving here is a series of caves on the largest of the islands, Koh Ha Yai. The light filtering through the cave at sunrise is quite magical.

**Koh Phi Phi:** here are more than 15 different dive sites with many rugged walls, interesting caves. Dazzling clouds of glassfish and gorgonians often obscure swim-through entrances. Sea fans harbor pipefish, Seahorses and shrimpfish, keeping even the most experienced divers entertained for days. There are lots of leopard sharks, manta rays and whale sharks sometime spotted.

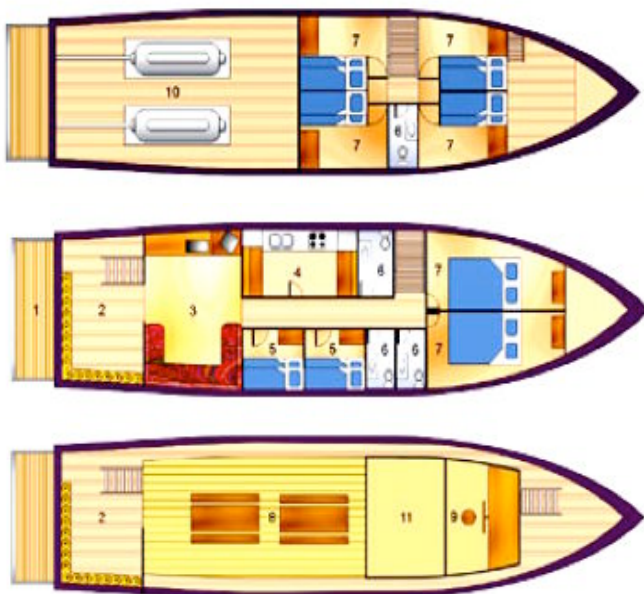
# MV Scuba Adventure Technical Drawing



Length	23 meters
Beam	5.5 meters
Tender	1 Inflatable
Main Engines	2 x 320 Hp
Fuel capacity	15,000 l
Generators	1 x 30 Kw 1 x 40 Kw
Compressors	2 x electric Comp Nitrox Blending Panel



Communication	Cellular Pone, Mobile Phone, VHF, Citizen Band
Emergency	First Aid, Dan Oxy Vac Kit, large O2 Cylinder, 22 Life jackets, 25 person life raft
Navigation	Radar, GPS, Sonar
Facilities	4 Toilets/Showers
Fresh Water	9,000 l
Entertainment	TV, Video, Stereo, Library
Accommodation	5 Twin & 2 Double Cabins with AC



1	Diving platform
2	Diving area
3	Saloon
4	Galley
5	Staff cabin
6	Shower/toilet
7	Guest cabin
8	Sundeck
9	Bridge
10	Engine room
11	Captain's cabin

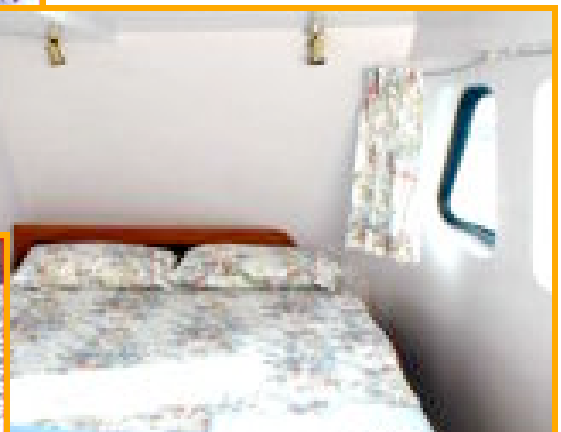
# The Boat



**KOH BON  
KOH TACHAI  
RICHELIEU ROCK**

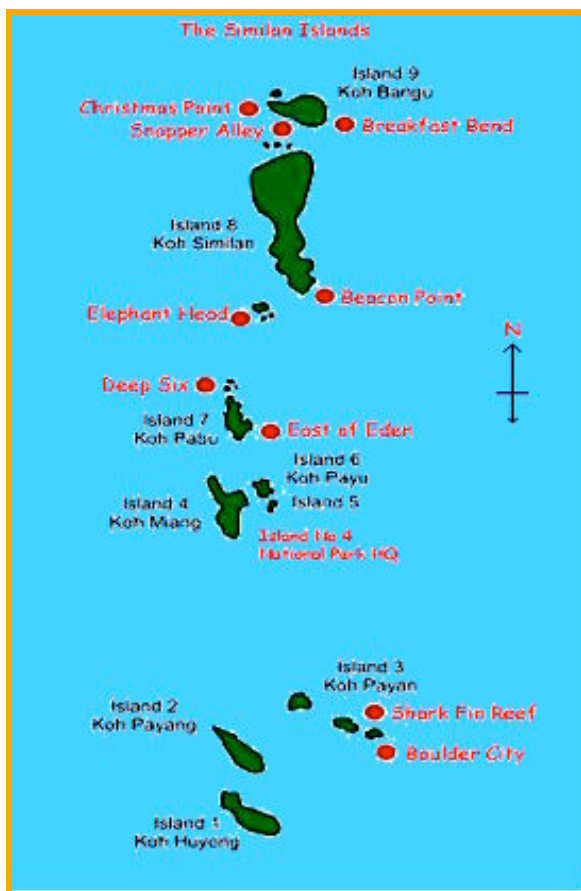


**SIMILAN ISLANDS**



**HIN DEANG &  
HIN MUENG**

## Similan Islands



The Similan Islands can certainly lay claim to being one of Phuket, Thailand's top scuba dive sites. Thriving reefs with abundant hard and soft corals highlight the dramatic terrain; the tremendous diversity of marine life makes it a fantastic observation point for the larger pelagic. Richelieu Rock has the reputation as being the place to see Whale Sharks and Manta Rays in good numbers. The Similan Islands lies about 100 km Northwest of Phuket, Thailand. Declared a National Park in 1982, the Similans are comprised of 9 islands, which run roughly North to South, and numerous smaller rock outcroppings. With snow-white beaches and a tropical jungle above the water and spectacular scuba diving sites in often crystal clear water below, it's not surprising that the Similans are ranked as one of the top 10 dive sites in the world!

Nearly all of the 9 islands are surrounded by huge underwater rock formations, eroded by the action of a relentless sea. These stone giants are home to an amazing variety of marine life and reach down to 40 meters or more, with passages, caves and gorges forming a unique underwater landscape. All this has

made names like Elephant Head, Shark Fin Reef and Christmas Point justly famous. A world of giant underwater boulders, caves, narrow passages, some 500 species of hard and soft corals and an amazing variety of marine life including Leopard Sharks, Guitar Rays, Whale Sharks and Manta Rays is waiting to be explored.

## Koh Bon

Koh Bon is an island located 13 miles northeast of the Similan Islands. You can dive all around this island but mainly on the west tip where we have seen Manta Rays so often during the years that it has led me to believe they breed there. Whale Sharks are also seen here occasionally while scuba diving. Diving down the west ridge you can see big schools of Travelies and Tunas as well as big Marble Rays and Leopard Sharks. On the way back to the shallows you can see schools of Yellow Snappers, Oriental Sweetlips as well as mating Cuttlefish, Octopus and Banded Sea Snakes. Definitely a site not to miss.



## Koh Tachai



Koh Tachai is an island located 25 miles northeast of the Similan islands. Tachai Reef is a round reef located at the south of the island, the reef is surrounded by big boulders and big fans where you start the dive enjoying the site of big barrel sponges and encounters with leopard sharks and rays lying on the sand. The top of the reef is all hard and soft corals of incredible variety. We've also seen the rarest Nudibranches you can imagine. The encounters with manta rays and whale sharks are frequent. We've seen up to three Manta Rays and one Whale Shark in a single dive!

## Surin Islands National Park

The Surin Islands Marine National Park lies just a few miles south of Burmese border. Surin Islands are more appropriately famous for their beautiful coves, bays and dense jungle than they are for their diving. The five islands are closely grouped together; the main islands larger than any of the Similans and covered in verdant rainforest. A small Sea Gypsy community lives on the east coast. The diving here is mainly on fringing hard coral reefs, similar to the east side of the Similans. Besides hawksbill turtles one can also observe juvenile tailfin batfish and a wide variety of colorful reef fishes.



## Richelieu Rock



Richelieu Rock is one of the most amazing dives sites we've ever done in our entire lives. Located 9 miles east of the Surin Islands, this rock comes out of the water approximately 1 meter during low tide. Diving around this pinnacle is something not to miss. There are schools of Barracudas and Big-Eye Travelies, so many of them you can't see your buddy anymore. Schools of Batfish, Sergeant Majors, Long Nose Emperors, Snappers, Rainbow Runners and Cobias are always around. You also find big Potato Cod, Marble Rays and, during the last two seasons on the north and west side, about 200 Blue Spotted Stingrays were lying on the sand. The best are the White-Spotted Shovelnose Rays and the Whale Sharks, a rare site in any other part of the world, but a very common here. During last season we saw Whale Sharks while scuba diving on every trip from the end of January to beginning of May and on four different occasions two swimming together!

## Schedule 2010/11 – November to May

### Similan Islands, Koh Bon, Koh Tachai & Richelieu Rock

Price 28,700 THB - 4 days/4 nights - 14 dives

Price 37,700 THB - 5 days/5 nights - 18 dives\*\*

Departure: 5PM - Return: 5PM

SA60/10 14-18 Nov-10	SA10/11 15-19 Feb-11
SA61/10 19-23 Nov-10	SA12/11 23-27 Feb-11
SA62/10 24-28 Nov-10	SA13/11 01-05 Mar-11
SA64/10 30 Nov/4 Dec-10	SA15/11 09-13 Mar-11
SA65/10 08-12 Dec-10	SA16/11 15-19 Mar-11
SA66/10 14-18 Dec-10	SA18/11 23-27 Mar-11
SA68/10 22-26 Dec-10	SA19/11 29 Mar/02 Apr-11
SA69/10 28 Dec/2 Jan-11**	SA21/11 06-10 Apr-11
SA01/11 04-08 Jan-11	SA22/11 12-16 Apr-11
SA03/11 12-16 Jan-11	SA24/11 21-25 Apr-11
SA04/11 18-22 Jan-11	SA25/11 26-30 Apr-11
SA06/11 26-30 Jan-11	SA27/11 04-08 May-11
SA07/11 01-05 Feb-11	
SA09/11 09-13 Feb-11	

### Hin Deang & Hin Mueng

Price 18,000 THB - 3 days/ 3 nights - 10 dives

Departure: 5PM - Return: 5PM

SA64/10 03-06 Dec-10	SA17/11 19-22 Mar-11
SA67/10 18-21 Dec-10	SA20/11 02-05 Apr-11
SA02/11 08-11 Jan-11	SA23/11 16-19 Apr-11
SA05/11 22-25 Jan-11	SA26/11 30 Apr/03 May-11
SA08/11 05-08 Feb-11	SA28/11 08-11 May-11
SA11/11 19-22 Feb-11	SA29/11 12-15 May-11
SA14/11 05-08 Mar-11	

*Possibility to combine your trip Similan Islands/Koh Bon/Koh Tachai/Richelieu with our second liveaboard MV Scuba Cat to extend your trip to the Similan Islands.*

## Contact Information

**Sarah Kench, General Manager**

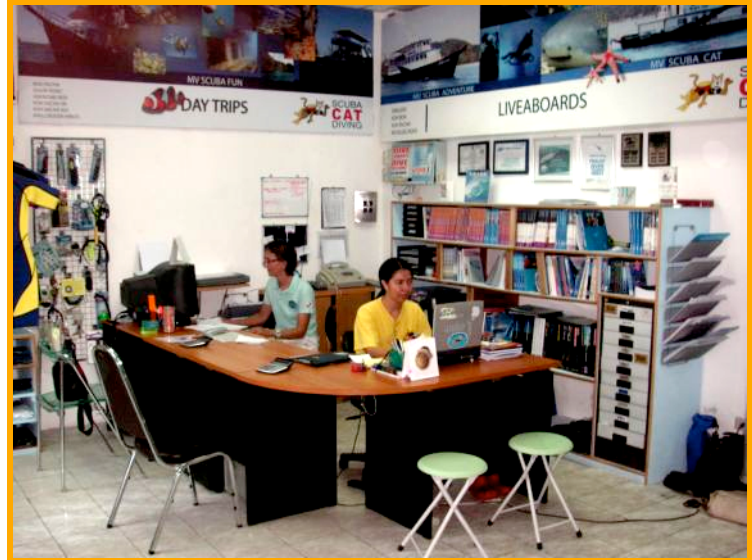
**Email: [info@scubacat.com](mailto:info@scubacat.com)**

**Mobile (+66) 089 872 2026**

**skype: divethailand**

**Address:**

**Scuba Cat Diving  
94 Thaweewong RD  
Patong Beach  
83150 Khatu, Phuket  
Thailand**



**Booking Office Telephone: (+66) 76 293 120**

**Tel: 076 293 121 from Thailand or 66 76 293 121 from overseas**

**Fax: (+66) 76 293 122**

**[www.scubacat.com](http://www.scubacat.com)**



## M/V Scuba Adventure from July to September

### *Racha Yai & Racha Noi*

Duration	Price	No of Dives
2 Days/1 Night	11,000 Baht	7

### *Koh Phi Phi –Koh Ha*

Duration	Price	No of Dives
3 Days/2 Nights	17,000 Baht	11

Non-Diver rate - trip price less 10% - Full charter possibility

**Price includes:** Hotel transfers, Freshly cooked buffet meals, Smacks, Fruits, Towel, Tanks, Weights, Divemaster service, Dive torch, 2 nitrox tank per day, Tea, Coffee and Water

**Depart: 7:30am - Return 5.00pm**

**Full set of equipment: 750 baht per day**

Code trip	Departure	Duration	Returns	Destination	Price / Baht
SA29/11	01 Jul 11	3D/2N	01 Jul 11	Phi Phi/Koh Ha	17,000
SA30/11	04 Jul 11	2D/1N	05 Jul 11	Racha Yai/Noi	11,000
SA31/11	07 Jul 11	2D/1N	08 Jul 11	Racha Yai/Noi	11,000
SA32/11	09 Jul 11	3D/2N	11 Jul 11	Phi Phi/Koh Ha	17,000
SA33/11	13 Jul 11	3D/2N	15 Jul 11	Phi Phi/Koh Ha	17,000
SA34/11	16 Jul 11	2D/1N	17 Jul 11	Racha Yai/Noi	11,000
SA35/11	19 Jul 11	2D/1N	20 Jul 11	Racha Yai/Noi	11,000
SA36/11	21 Jul 11	3D/2N	23 Jul 11	Phi Phi/Koh Ha	17,000
SA37/11	25 Jul 11	3D/2N	27 Jul 11	Phi Phi/Koh Ha	17,000
SA38/11	28 Jul 11	2D/1N	29 Jul 11	Racha Yai/Noi	11,000
SA39/11	31 Jul 11	2D/1N	01 Aug 11	Racha Yai/Noi	11,000
SA40/11	02 Aug 11	3D/2N	04 Aug 11	Phi Phi/Koh Ha	17,000
SA41/11	06 Aug 11	3D/2N	08 Aug 11	Phi Phi/Koh Ha	17,000
SA42/11	09 Aug 11	2D/1N	10 Aug 11	Racha Yai/Noi	11,000
SA43/11	12 Aug 11	2D/1N	13 Aug 11	Racha Yai/Noi	11,000
SA44/11	15 Aug 11	2D/1N	16 Aug 11	Racha Yai/Noi	11,000
SA45/11	17 Aug 11	3D/2N	19 Aug 11	Phi Phi/Koh Ha	17,000
SA46/11	21 Aug 11	3D/2N	23 Aug 11	Phi Phi/Koh Ha	17,000
SA47/11	24 Aug 11	2D/1N	25 Aug 11	Racha Yai/Noi	11,000
SA48/11	27 Aug 11	2D/1N	28 Aug 11	Racha Yai/Noi	11,000
SA49/11	29 Aug 11	3D/2N	31 Aug 11	Phi Phi/Koh Ha	17,000
SA50/11	02 Sep 11	3D/2N	04 Sep 11	Phi Phi/Koh Ha	17,000
SA51/11	05 Sep 11	2D/1N	06 Sep 11	Racha Yai/Noi	11,000
SA52/11	08 Sep 11	2D/1N	09 Sep 11	Racha Yai/Noi	11,000
SA53/11	10 Sep 11	3D/2N	12 Sep 11	Phi Phi/Koh Ha	17,000
SA54/11	14 Sep 11	3D/2N	16 Sep 11	Phi Phi/Koh Ha	17,000
SA55/11	17 Sep 11	2D/1N	18 Sep 11	Racha Yai/Noi	11,000
SA56/11	20 Sep 11	2D/1N	21 Sep 11	Racha Yai/Noi	11,000
SA57/11	22 Sep 11	3D/2N	24 Sep 11	Phi Phi/Koh Ha	17,000
SA58/11	26 Sep 11	3D/2N	28 Sep 11	Phi Phi/Koh Ha	17,000
SA59/11	26 Sep 11	2D/1N	30 Sep 11	Racha Yai/Noi	11,000