



Scuba Cat Diving Season 2013 -2014



MV Scuba Adventure

The Ultimate Adventure.....

Welcome onboard Scuba Adventure, one of the original, classic liveaboard cruising the warm waters of the Andaman Sea, visiting the wonderful sites in the Phuket area.

Scuba Adventure is truly a comfortable vessel, comprising 5 twin cabins, 2 double cabins, all with individually controlled air conditioning accommodating a maximum of 12 guests. The covered deck is the place to relax, to enjoy a movie or read a book or discuss the dives with your buddies. The dive platform is compact but spacious and well organized which makes it the ideal platform to enter the magical realm of the Andaman Sea.

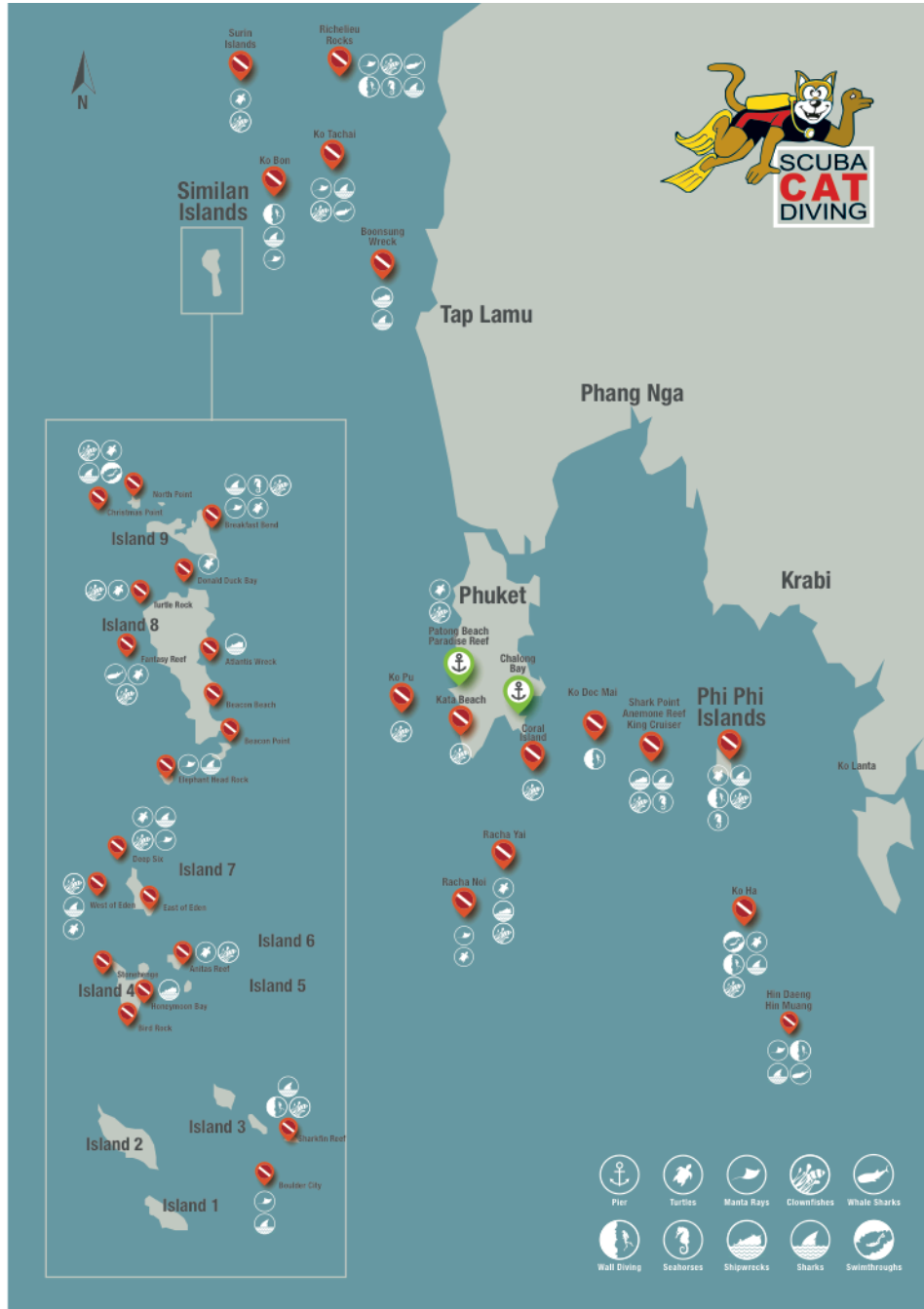
With a very experienced Thai boat crew (over 10 years) looking after all your needs – from getting ready for the dive to preparing wonderful Thai cuisine. The key to our success onboard Scuba Adventure is listening and understanding to our guests desires. With flexible itineraries for the dives trips, our very experienced dive crew will provide you with the best possible dive sites available in the season. In addition we monitor the radio for information regarding sightings at various locations to give you the best chances of seeing wonderful creatures like manta rays and whale sharks.



From the moment you arrive to the moment you leave, your experience onboard Scuba Adventure will leave you with the desire to come back again and again. Our excellent dive crew, will lead you on your magical journey. They have worked in the area for years and know the dive sites well. This enables them to show you the rare and hidden treasures of the dive sites that otherwise you might miss. For the 2013/14 season this year we are offering a combination of trips for 4 days and 3 day which run back to back, allowing you to enjoy 7 days and nights on board to destinations such as, Similan Islands, Richelieu, Hin Daeng /Muang and Phi Phi.

All of these sites show the best diving Thailand has to offer in both the North and South Andamann Ocean.

We are also incorporating a schedule that allows divers to receive their certification during the liveboard experience, by allowing the first dive to be suitable for both fun diving and for students so you can either enjoy relaxed guided dives or start your dive adventure whilst on the liveboard.



MV Scuba Adventure Information.....

Construction

23 meters overall length, 5.5 m wide, refitted specifically with diving in mind.

Speed

Cruising 10 knots, maximum 12 knots

Engines

2 x Hino 320 HP

Passenger/Crew Capability

Maximum of 12 guests with 5 boat crew and Dive Crew

Safety features and equipment

MV Scuba Adventure has a complete supply of first aid equipment, including a DAN oxygen kit with Demand Valve and Large Oxygen Supply. Life raft for 25 persons. The crew are able to communicate with the DAN hotline if an unlikely but necessary circumstance should arise. Scuba Cat is affiliated with two re-compression chambers in the Phuket area. Life Vests are readily available for all customers and crew on board.

Electronics

Marine Radio, Radar, Sonar, GPS, Depth Finder, Fish Finder, CCTV, Generators 1 x 30K, 1 x 40K

Fuel Capacity

15,000 Litres

Fresh Water Capacity

9,000 Litres

Amenities

220 V AC current with 2 pin sockets in cabins and most other connections available elsewhere on board.

Spacious Salon with TV, DVD and Stereo.

Dive and Additional Equipment

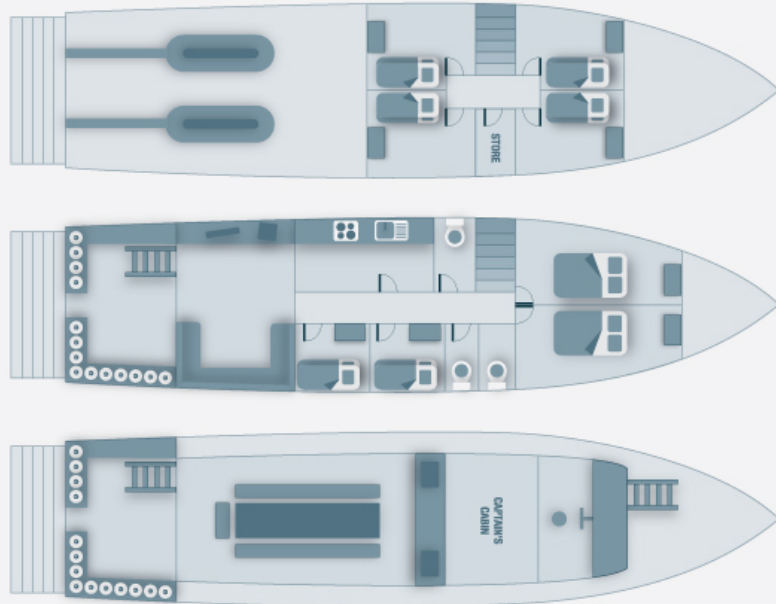
Nitrox, 36 Scuba Tanks both DIN and Yoke fittings, 1 Inflatable Tender, Rental of all essential dive equipment available, 2 x Coltri Sub Compressors

Food and Drink

Scuba Adventure's delicious Cuisine is included in the cost. Three meals a day are served buffet style along with a light breakfast served before the first morning dive, another snack before second afternoon dive and again after the night dive. Coffee tea and water are provided throughout the day. A small charge will be made for soft drinks and beers after the days diving.



MV SCUBA ADVENTURE



MV Scuba Adventure Trips on Offer 2013 /14 season

Option 1

4 day 4 night trips to Similan, Koh Bon, Koh Tacha and Richelieu Rock

14 dives in total

Price	Diver	23,000thb	Snorkeler/non diver	13,000thb
-------	-------	-----------	---------------------	-----------

Option 2

3 day 3 night trips to Hin Daeng, Hin Muang, Koh Haa and Phi Phi

11 dives in total

Price	Diver	18,000thb	Snorkeler/non diver	9,900thb
-------	-------	-----------	---------------------	----------

Option 3

7 day and night trip to Hin Daeng, Hin Muang, Koh Haa, Phi Phi, Similans, Koh Bon, Koh Tachai and Richelieu Rock

25 dives in total.

Price	Diver	37,000thb	Snorkeler/non diver	20,500thb
-------	-------	-----------	---------------------	-----------

Price based on a twin share cabin, [For a double bed cabin add 500thb per night](#)

Book any 2 trips and get a 10% discount on the total price.

For a single room add 50% of the cost as a supplement

Marine park fee's are not included in the price

Nitrox tanks and rental equipment are not included in the price



Sample Itinerary..... Similan, Koh Bon, Tachai and Richelieu Rock

The schedule you do on the boat varies with the currents and the tides. Our tourleader and captain will do the best option for you.

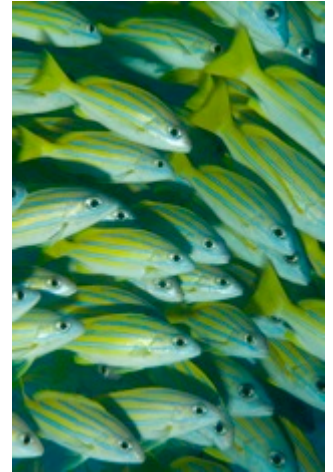
Departure day

We pick you up from your local hotel at around 5pm.

We will allocate cabins and then set up equipment after a short boat briefing then you can relax during the travel time to the islands, with a light evening meal.

Day 1

- 6.00- Wake up and light breakfast, fruits, cereal, toast and coffee
- 7.00 - General dive and safety briefing
- 7.30 - First Dive
- 9.00 - Full breakfast
- 11.00 – Second Dive
- 12.30 – Lunch
- 15.30 - Third dive Dive followed by a light snack of fruit and cookies
- 19:00 – Fourth dive, night dive or sunset dive
- 20.00 - Dinner followed by time to relax with your new friends sharing stories from the days diving or relaxing under the stars



Days 2 and 3 similar schedule to day 1 except moving to the more north sites

Day 4

- 06.00 - Wake up to a light breakfast of fruit cereal, toast coffee and juice
- 07.00 - First Dive followed by a full western breakfast
- 10.30 - Second Dive
- 12:00 - Lunch
- 15:30 - Return to the pier and transfer back to your hotel.



Sample Itinerary..... Hin Daeng / Muang, Koh Haa and Phi Phi

The schedule you do on the boat varies with the currents and the tides. Our tourleader and captain will do the best option for you.

Departure day

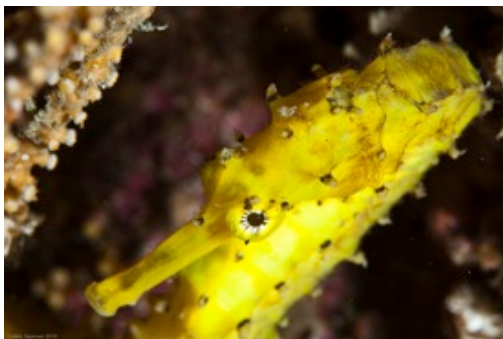
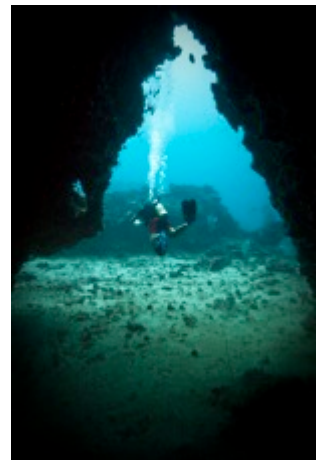
We pick you up from your local hotel at around 5pm. We will allocate cabins and then set up equipment after a short boat briefing then you can relax during the travel time to the islands, with a light evening meal.

- 6.00- Wake up and light breakfast, fruits, cereal, toast and coffee
- 7.00 - General dive and safety briefing
- 7.30 - First Dive
- 9.00 - Full breakfast
- 11.00 – Second Dive
- 12.30 – Lunch
- 15.30 - Third dive Dive followed by a light snack of fruit and cookies
- 19:00 – Fouth dive, night dive or sunset dive
- 20.00 - Dinner followed by time to relax with your new friends sharing stories from the days diving or relaxing under the stars

Days 2 similar schedule to day 1 except moving to the more south sites

Day 4

- 06.00 - Wake up to a light breakfast of fruit cereal, toast coffee and juice
- 07.00 - First Dive followed by a full western breakfast
- 10.00 - Second Dive
- 12:00 - Third Dive
- 13.30- Lunch
- 15:30 - Return to Patong pier and transfer back to your hotel.



Special for PADI Courses.....

PADI Open Water Diver Training – and PADI Advanced Open Water Diver Training Liveboard Style

Without a doubt this is certainly the most convenient and enjoyable way to learn to dive or continue your training to new levels.

Spending time on the liveboard allows getting to know your instructor much better as well as making the meeting many new diver friends a natural and enjoyable process. The amount of pertinent information and new insights gained will far exceed that which you have learned in the classroom and so much fun as well.

The convenience of being surrounded by dive sites and the efficiency of sleeping on the boat means that our courses always include extra diving! These extra dives are done at a much more relaxed pace than on the normal day trip schedule- win win.

To take part in the open water course you would need 1 day in the classroom and pool, then on the day of departure you would dive from our half day boat before joining the liveboard.

If you are on the boat for 3 days then you can go from never dived before to an Advanced diver with our special combination course, which is also at a special price.



Liveaboard Specials

All PADI Courses include Manual and Certification (unless indicated)

Rooms are twin share

Course	Similan 4 day /night	Hin Daeng 3 day/ night	North and South 7 day/ night
Open water Diver including Liveaboard	33,000thb	28,000thb	47,000thb
Advanced open water including liveaboard	31,500thb	26,500thb	45,500thb
Open and Advanced including Liveaboard	41,500thb	36,500thb	55,500thb

Other PADI Courses Offered on board MV Scuba Adventure.

In addition to trip cost

Course	No. of dives	Cost on board (THB)
Nitrox	2	7500
National Geographic Portal	2	7500
4 dive Specialities	4	9500
2 Dive Specialities	2	7500
Night Dive	3	8250
SMB diver	2	5000
Adventure Dive manual & PIC extra	1	1,500

Schedule 2013 /14 October to May.....

Trip Code	Date Depart	Date Return	Destination	No. Days / nights	Port Depart/Return
SA/01	31-Oct	01-Nov	Phi Phi	2/1	Chalong
SA/02	01-Nov	05-Nov	Sim/RR	4/4	Chalong
SA/03	08-Nov	11-Nov	Hin Daeng	3/3	Chalong
SA/04	13-Nov	16-Nov	Hin Daeng	3/3	Chalong/ TL
SA/05	16-Nov	20-Nov	Sim/RR	4/4	TL
SA/06	22-Nov	26-Nov	Sim/RR	4/4	TL / Chalong
SA/07	26-Nov	29-Nov	Hin Daeng	3/3	Chalong
SA/08	01-Dec	04-Dec	Hin Daeng	3/3	Chalong
SA/09	04-Dec	08-Dec	Sim/RR	4/4	Chalong/ TL
SA/10	10-Dec	14-Dec	Sim/RR	4/4	TL / Chalong
SA/11	14-Dec	17-Dec	Hin Daeng	3/3	Chalong
SA/12	19-Dec	22-Dec	Hin Daeng	3/3	Chalong
SA/13	22-Dec	26-Dec	Sim/RR	4/4	Chalong/ TL
SA/14	28-Dec	01-Dec	Sim/RR	4/4	TL / Chalong
SA/15	01-Jan	04-Jan	Hin Daeng	3/3	Chalong
SA/16	06-Jan	09-Jan	Hin Daeng	3/3	Chalong/ TL
SA/17	09-Jan	13-Jan	Sim/RR	4/4	TL / Chalong
SA/18	15-Jan	21-Jan	Sim/RR	6/6	TL
SA/19	23-Jan	27-Jan	Sim/RR	4/4	TL / Chalong
SA/20	27-Jan	30-Jan	Hin Daeng	3/3	Chalong
SA/21	01-Feb	05-Feb	Sim/RR	4/4	Chalong/ TL
SA/22	07-Feb	11-Feb	Sim/RR	4/4	TL / Chalong
SA/23	11-Feb	14-Feb	Hin Daeng	3/3	Chalong
SA/24	16-Feb	19-Feb	Hin Daeng	3/3	Chalong/ TL

****6 day 6 night trip is Price 34,500thb for twin share cabin**

Schedule 2013 /14 November to April.....Continued

Trip Code	Date Depart	Date Return	Destination	No. Days / nights	Port Depart/Return
SA/25	19-Feb	23-Feb	Sim/RR	4/4	TL
SA/26	25-Feb	01-Mar	Sim/RR	4/4	TL / Chalong
SA/27	01-Mar	04-Mar	Hin Daeng	3/3	Chalong
SA/28	06-Jan	09-Mar	Hin Daeng	3/3	Chalong
SA/29	09-Mar	13-Mar	Sim/RR	4/4	Chalong/ TL
SA/30	15-Mar	19-Mar	Sim/RR	4/4	TL / Chalong
SA/31	19-Mar	22-Mar	Hin Daeng	3/3	Chalong
SA/32	24-Mar	27-Mar	Hin Daeng	3/3	Chalong
SA/33	27-Mar	31-Mar	Sim/RR	4/4	Chalong/ TL
SA/34	02-Apr	06-Apr	Sim/RR	4/4	TL / Chalong
SA/35	06-Apr	09-Apr	Hin Daeng	3/3	Chalong
SA/36	12-Apr	15-Apr	Hin Daeng	3/3	Chalong
SA/37	15-Apr	19-Apr	Sim/RR	4/4	Chalong/ TL
SA/38	21-Apr	25-Apr	Sim/RR	4/4	TL / Chalong
SA/39	25-Apr	28-Apr	Hin Daeng	3/3	Chalong
SA/40	30-Apr	03-May	Hin Daeng	3/3	Chalong
SA/41	05-May	08-May	Hin Daeng	3/3	Chalong
SA/42	10-May	13-May	Hin Daeng	3/3	Chalong



Rental Rates Per Day.....

BCD	-	250 Baht
Wetsuit	-	150 Baht
Mask	-	50 Baht
Fins	-	50 Baht
Full Equipment	-	500 Baht (Everything Above)
Computer	-	300 Baht
Dolphin Rebreather Rental	-	3,000 Baht
Nitrox Fill	-	200 Baht
Nitrox package all dives	-	- 25% of cost
15l cylinder	-	300 Baht
Dive Insurance	-	150thb per day

Marine Park Fee's

Similan and Richelieu	4/4	-	1,600thb
Similan and Richelieu	6/6	-	2,000thb
Hin Daeng / Muang	3/3	-	800thb
North and South combined	7/7	-	2,400thb

Payable on the boat in local currency.

Others.....

Beer	-	80 Baht
Soft drink	-	30 Baht
Scuba Cat T shirt	-	350 Baht
Scuba Cat Polo shirt	-	500 Baht,
Scuba Cat Mask Strap	-	200thb

Please feel free to email info@scubacat.com for any questions or assistance

Number of Dives/Site selection:

We plan a scheduled number of dives depending on how many days you will be onboard, these are subject to weather conditions and security/safety issues. Dive site selection will be made by the Captain or Cruise Director. There are numerous fantastic sites in Andaman Sea and our objective is to take you to the best of the best !

What diver certification level is needed for diving on board Scuba Adventure ? :

Everyone is welcome on board, no matter what level your certification. Dive groups and site selection will be chosen to meet your safety, comfort and diving ability – and is subject to the discretion of the Tour Leader. Our professional dive crew will take you on the easy route or to another site if you don't like currents. If you are up for it, we'll take you right into it for all the action the site offers !

Dive Guides and Diver Safety:

Our experienced dive crew would be delighted to assist you. Nitrox fills and courses are available on board to enhance your diving safety. Please allow 18 hours between last dive and flying. Guests are requested to show diving certification cards on checking in and are strongly recommended to have valid dive insurance (Padi, Dan or equivalent).

Water Temperature and Wetsuit recommendations:

The Andaman Sea with its usually clear blue waters, great visibility has water temperatures of approx 26-28 degrees – a 3-5 mm shorty is okay with most guests comfortable with a 3-5mm long.

Equipment on board: Full rental equipment is available. Please advise your rental equipment needs including sizes when you book. MV Scuba Adventure carries mostly 12 litre compressed aluminum tanks plus some 15 litre aluminum tanks available. Tank valves for both international and DIN are available on board. Please let us know your requirements when you book. Any dive equipment failure or loss will require you to rent a replacement from Scuba Cat Diving at our published rates. If Scuba Cat Diving equipment is lost/damaged, full replacement cost will be charged at the discretion of the Tour Leader. Published equipment prices are available on board.

Electrical current and plugs :

220 volts is standard throughout the boat.

Meals:

Our Thai cook is excellent, preparing a variety of Thai, and Western dishes. Please advise any special meal requirements on the guest information form.

Currency: Please pay all on board costs in Thai Baht.

Luggage and what should I bring :

All luggage will be taken on board. If you have large bags you do not need on the trip, please arrange to leave at your hotel if possible. Other items you may need on board are

bathing suits, shorts, t-shirts, sunscreen and a light weight jacket or sweater.

Insurance :

You need 2 types of insurance when planning your dive holiday –

- 1) Diving insurance is strongly recommended due to the high cost for you should you have a diving accident and require check which Dan area can cover you.
- 2) General travel/cancellation insurance. If you are unable to make your dive trip and the date has past our cancellation terms and conditions we are very sorry but regardless of the circumstances we cannot refund or transfer to another date.

Medical Assistance :

We are prepared to handle most accident or medical emergencies. Our dive crews are first aid trained and we have an extensive first aid kit on board plus loads of emergency oxygen. Please bring any of your own medications that you may need. You can help as well by making sure you are in good condition for diving – prevention is always better than the cure. Please remember to dive safely and to make sure your Dan Diver's Alert Network or other dive insurance is up to date.

Contact Information.....

Sarah Kench, General Manager
Email: info@scubacat.com
Mobile (+66) 089 872 2026

divethailand Address:

Scuba Cat Diving
78 / 19 Soi Wattana, Thaweewong RD Patong Beach 83150 Kathu, Phuket
Thailand

Booking Office Telephone: (+66) 76 293 120 Tel: 076 293 121
from Thailand or 66 76 293 121
from overseas Fax: (+66) 76 293 122

www.scubacat.com